

HSF

NOTES:

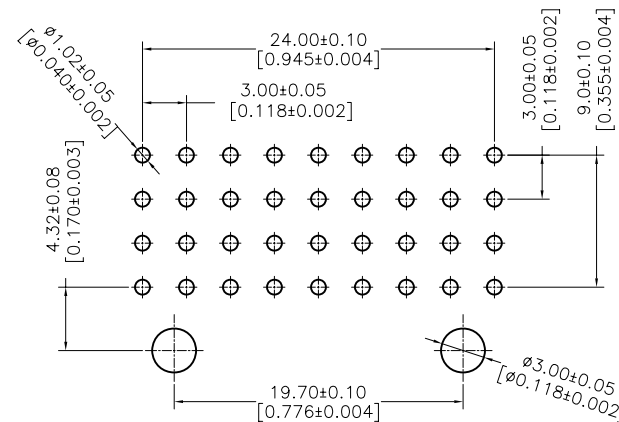
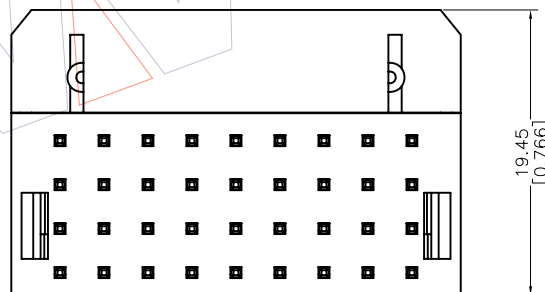
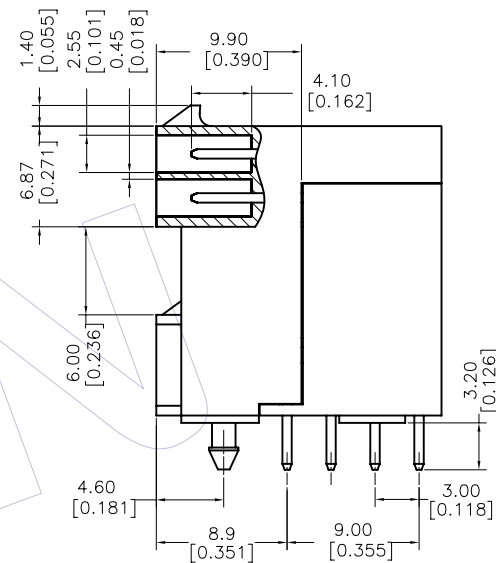
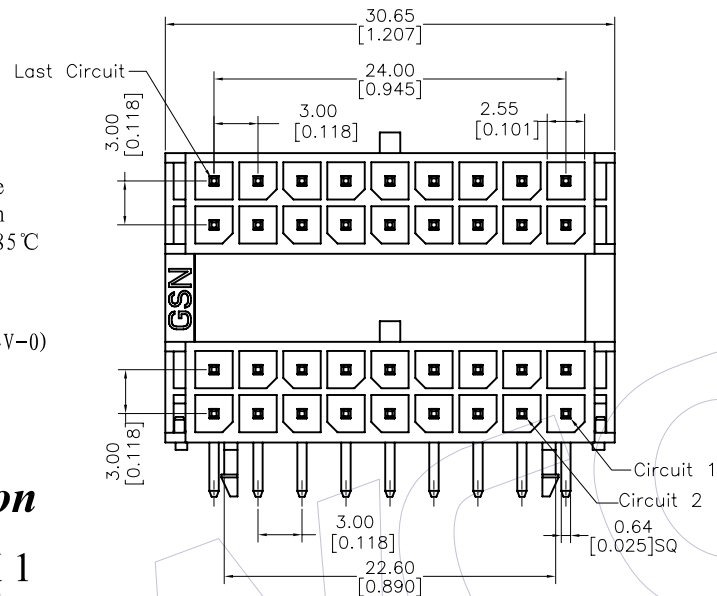
Current Rating: 5.0AMP
 Contact Resistance: 10mΩ Max
 Withstand Voltage: 1000V AC/Minute
 Insulation Resistance: 1000MΩ Min
 Operation Temperature: -25°C to +85°C

Contact Material: Brass
 Contact plating: Au or Sn over Ni
 Insulator Material: Polyester (UL94V-0)
 Standard: LCP


Ordering Information

WF3001-4WR 09 B X 1

Terminal shape:	NO.of Pins Per	Packing:
WR:Wafer 90° DIP	Row:09Pin	T=Tube
		A=Tray
		R=Tape&Reel



Recommended P.C.B Layout(Top Side)

			OPERATION		DRAW Rikey	DATE 2012.03.07	SCALE 1:1	PART NO. WF3001-4WR09BX1	 Http: www.wcon.com WCON-Dongguan WCON-Kunshan Tel: +86 769 85358920 Fax: +86 769 85358915 E-mail: sales@wcon.com
			X.X	±0.40					
A1	2012.05.15	Added Mark	YSH	X.XX	±0.25		SIZE A4	TITLE: 3.0mm Wafer 四排 90°DIP 带叉柱	
A0	2012.03.07	NEW	-	X.XXX	±0.15		SHEET 1/1	Customer NO.	
REV	DATE	MODIFICATION DESCRIPTION	CHANGE	Angle	± 3'	APPROVE	DATE	PROJ.	
				DIM	TOL				